



ESOL Family Outreach Newsletter

Term: Spring | Issue 5 | Date: March 27– April 30, 2019 | Reckenwald

Pinellas County Schools - News



K-12 Summer Bridge Prepare your child for success!

Summer Bridge provides students support in reading, math and science throughout the summer to help them begin the next school year with confidence and success. Summer Bridge is especially beneficial for students who are performing below grade level in reading and/or math or need extra support.

Apply starting March 25 at reservation.pcsb.org

Transportation:

Parents will be responsible for providing transportation for their children.

Dates:

* June 11 - July 18

Hours: 8:30 a.m. to 12:30 p.m.

Days: Monday - Thursday

* Many Summer Bridge high school programs begin Tuesday, June 11.

Food Service:

Breakfast and lunch will be served at Elementary and Middle School sites: Breakfast will be available at no charge to students. Students may bring bottled water.

Freshmen Prep

Get to know your new high school!

For current eighth-graders:

- Learn about and sign-up for sports, clubs, extra-curricular activities
- Get to know the school campus and get your locker
- Participate in fun group projects that are of interest to you
- Meet other incoming freshmen

Three sessions — Sign up for one:

8:30 a.m. to 12:30 p.m.
Monday-Thursday

Session 1: June 11-20

Session 2: June 24- July 3

Session 3: July 8-18

For more information about Summer Bridge, please contact:

Elementary Education at 727-588-6443

Middle School Education at 727-588-6453

High School Education at 727-588-6302

Information in Spanish: 727-588-6415

Free Events for ESOL Families

1. Summer Bridge Program/Transition from Middle School to High School

Locations:

◇ Oak Grove Middle School

Date: Thursday, April 25

Time: 6:00-7:00 p.m.

◇ Largo Middle School

Date: Thursday, May 23

Time: 6:00-7:00 p.m.

2. Transition to Middle/High School

Location: Clearwater East Community Library located in SPC Clearwater Campus: SPC Clearwater Campus: 2465 Drew St. Clearwater | Building LI | Community Room

Date: Thursday, May 02

Time: 3:30-4:30 p.m.

3. Transition from Elementary School to Middle School

Locations:

◇ Skycrest Elementary School

Date: Tuesday, April 30

Time: 8:00-9:00 a.m.

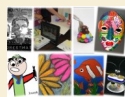
◇ Ponce de Leon Elementary School

Date: Thursday, May 9

Time: 5:30-6:30 p.m.

PCS Elementary and Middle

School Art Camps



The four-day camps will take place in June. The camps are offer for current PCS students entering 4th, 5th, 6th, 7th and 8th grades next year.

Deadline to apply: April 19. To learn more

and apply: <https://www.pcsb.org/Page/26999>

Acceptance: 30 PCS students for each camp First come, first serve basis.

Transportation must be provided by family.

Students bring own sack lunch & snack.

For more questions, please email:

Elementary Education: levesquej@pcsb.org

Middle School Education: oglejo@pcsb.org

For more information in English/
Spanish, please contact:

Ericka Reckenwald
ESOL Family Outreach
Phone: 727-588-6415

Resources for Families and Students

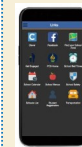


Pinellas County Schools en Español Facebook page

Help us spread the word! Connect with us on social media through Pinellas County Schools en Español—

www.facebook.com/PCSBespanol/

The page connects Hispanic families with news and information about the school district and ESOL events in Spanish! Please follow the link above, like, and share!



Free Pinellas County Schools App

It helps families access student information on their cell-phones and mobile devices. The App provides easy access to:

Current Student Grades, Current Student Attendance, Recent Student Assignments, Upcoming Student Assignments, and more. The app can be downloaded from the Google Play Store or the Apple App store.



Clever @ Home supports learning outside of the classroom anytime, anywhere. Students are encouraged to continue using the resources found within Clever before or after the school day from home. They can access these resources through clever.com/in/pcsby by signing in with their PCS account.



The Personalized Learning Pathway (PLP)

It helps students keep track of achievements, goals, see their performance on assessments, access

targeted lessons to improve, track progress toward graduation and discover areas they may need to address, and more. Students can access the PLP through clever.com/in/pcsby by signing in with their PCS email account.



Pinellas County Schools Parent Helpline En Español

Spanish-speaking parents have the opportunity to call the helpline to obtain information related to the school district.

Helpline phone number: 727-588-6415